

SECONDA FACOLTA'  
DI MEDICINA E CHIRURGIA  
SAPIENZA DI ROMA

MASTER DI I LIVELLO  
DIAGNOSI E CURA DEL PIEDE DIABETICO  
ANNO ACCADEMICO 2007/2008

***L'ecografia del piede  
nei pazienti diabetici***

DOTT. FRANCESCO PAPA – DOTT.SSA ALESSANDRA PAUSANIA – DOTT. ALESSANDRO CRIBARI

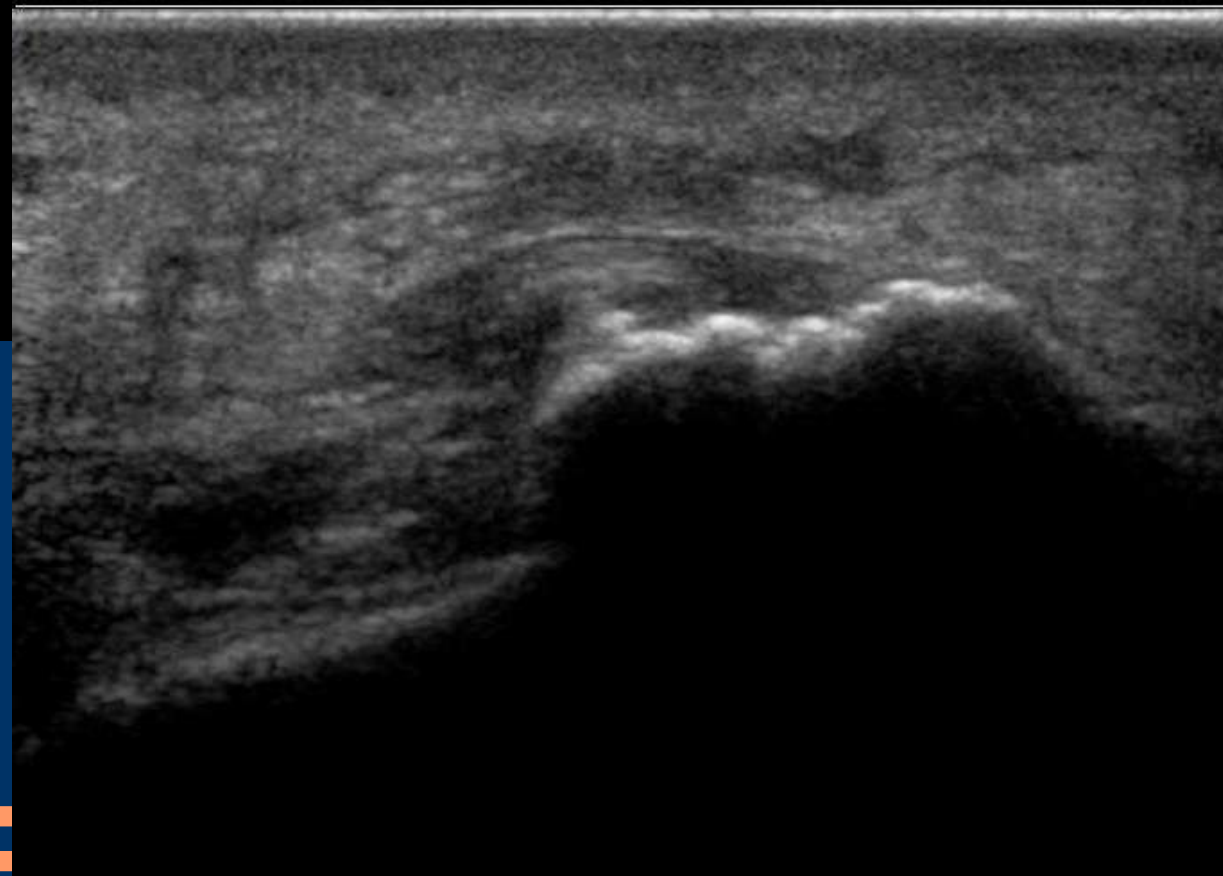
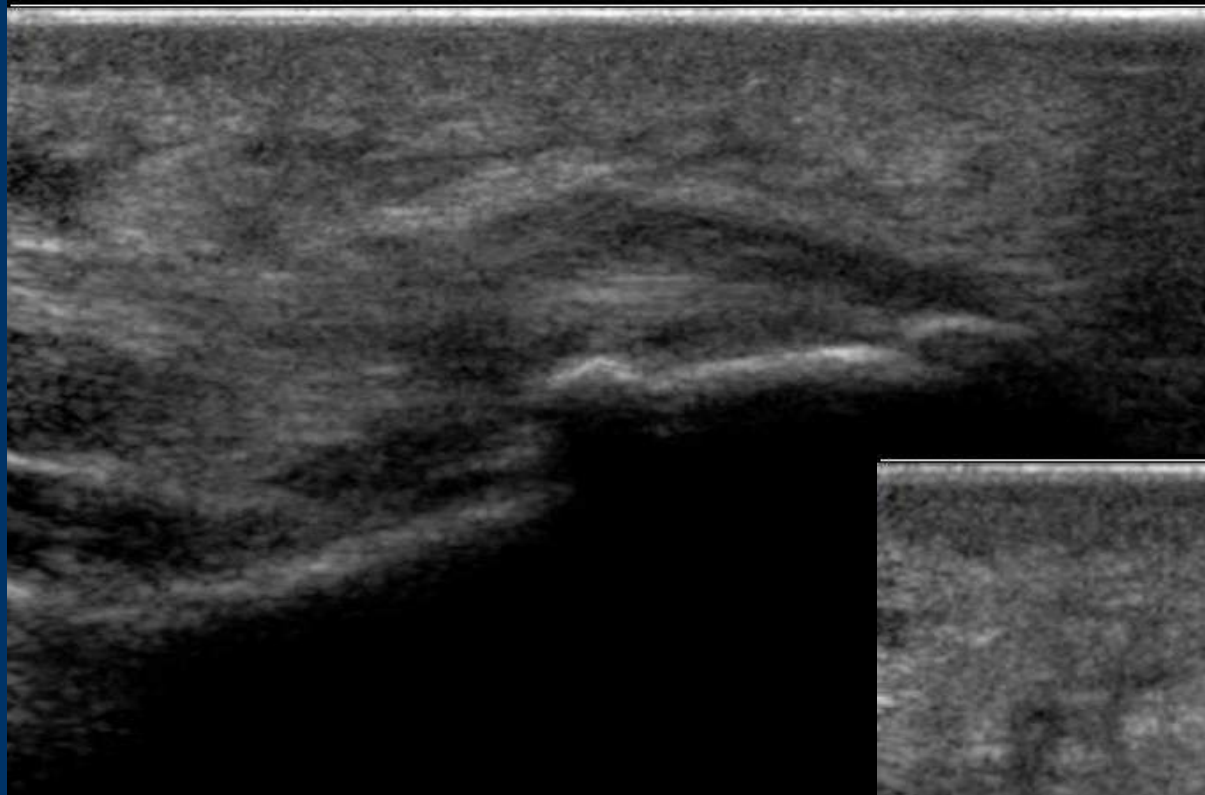
---

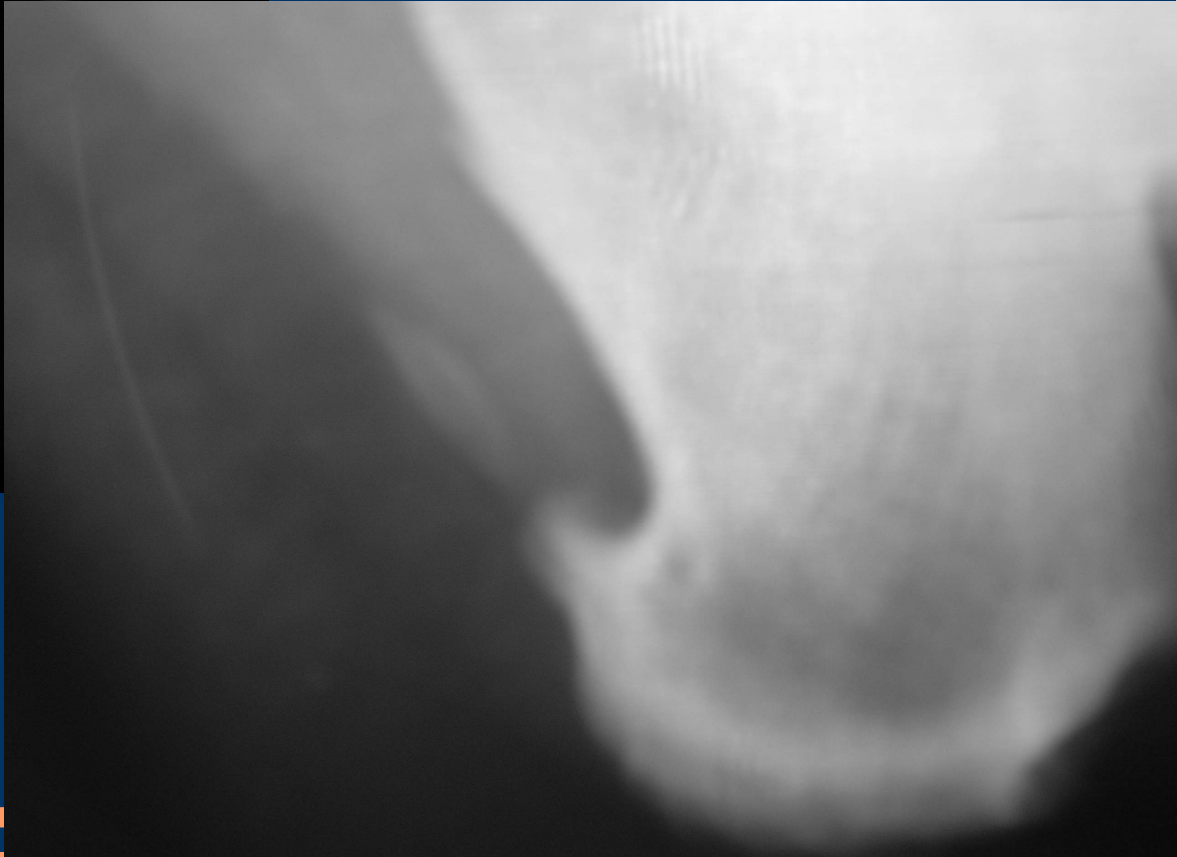
---

## *Cosa ricercare ?*

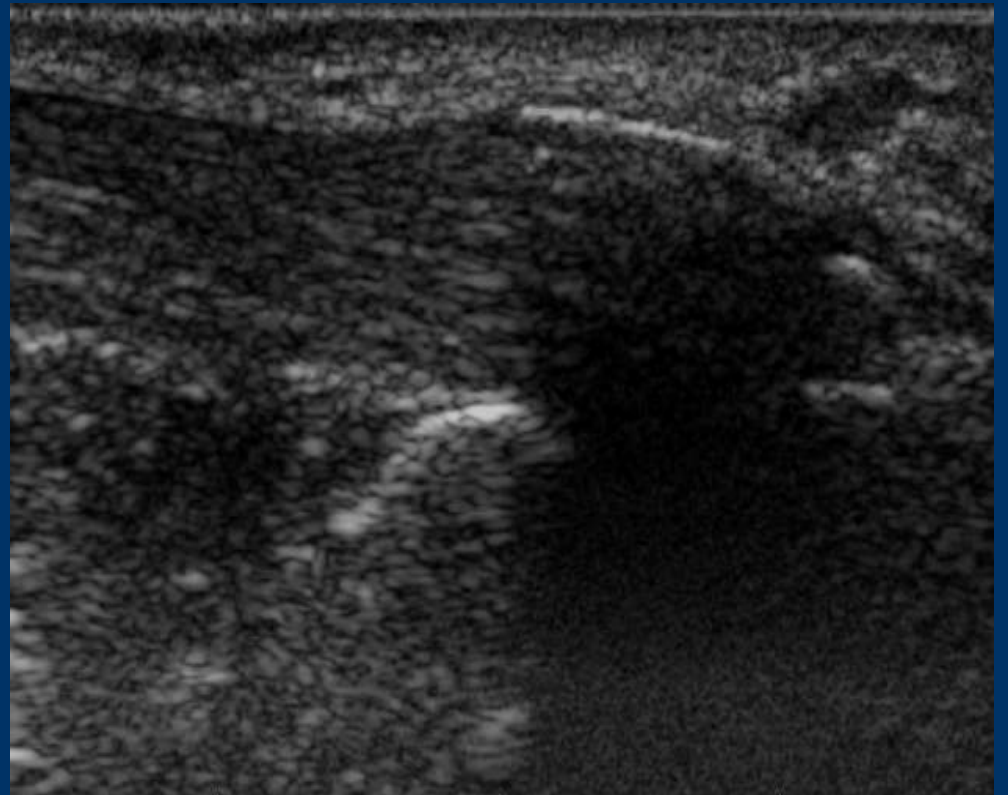
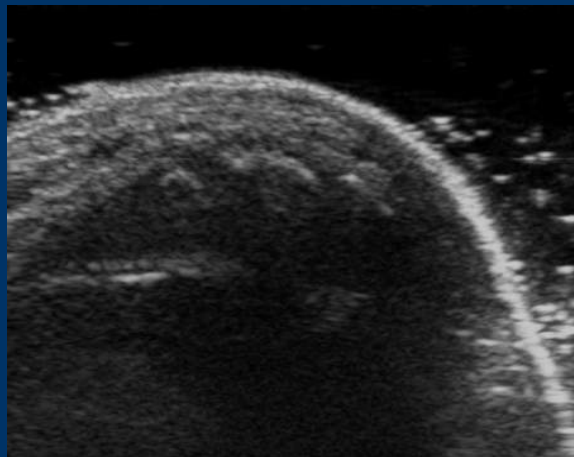
- Nel retropiede: spina calcaneare o fascite, patologie del tendine d'Achille
  - Nell'avampiede: sesamoidi accessori, patologie muscolo-tendinee, calcificazioni e microcalcificazioni capsulari, modifiche ossee ( esostosi, erosioni, depressioni, alterazioni congenite ), lussazioni, flogosi, cisti e neuromi.
- 
-

# *spina calcaneare o fascite*

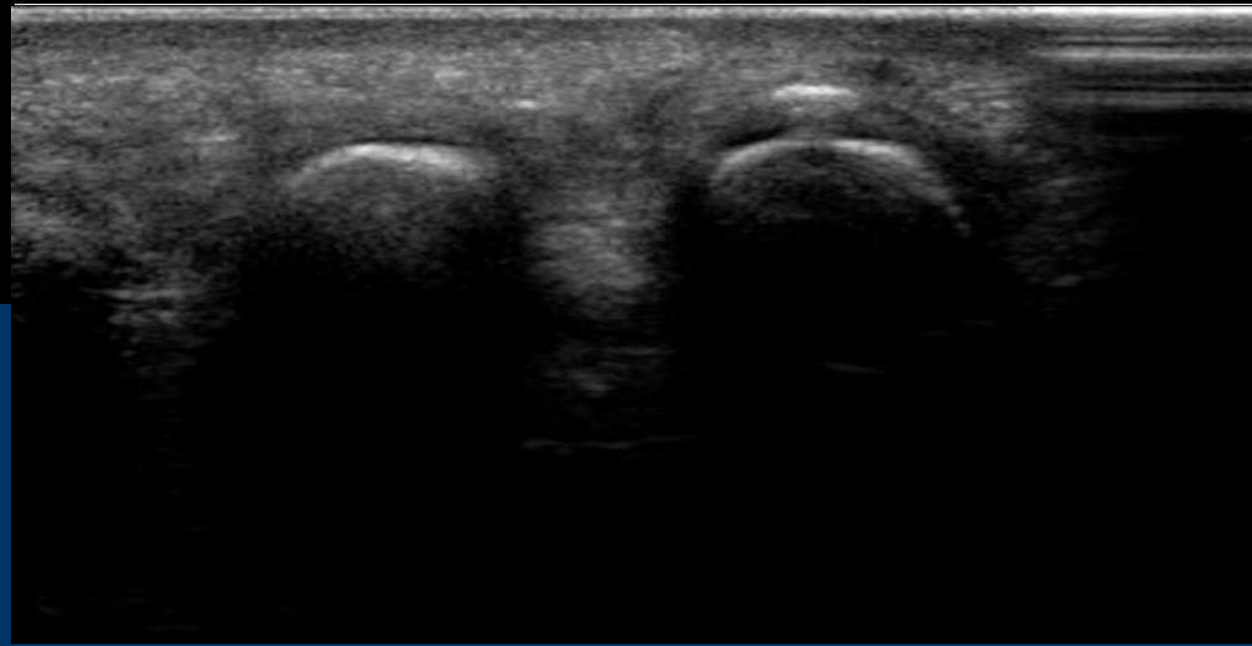
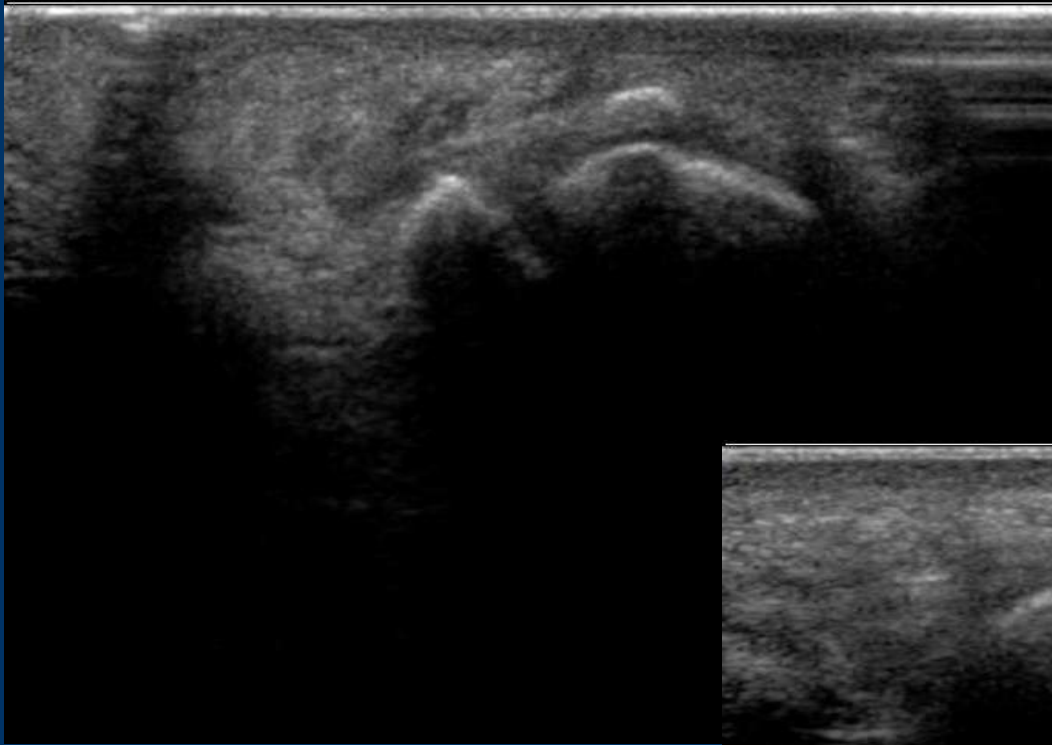




# *patologie del tendine d'Achille*

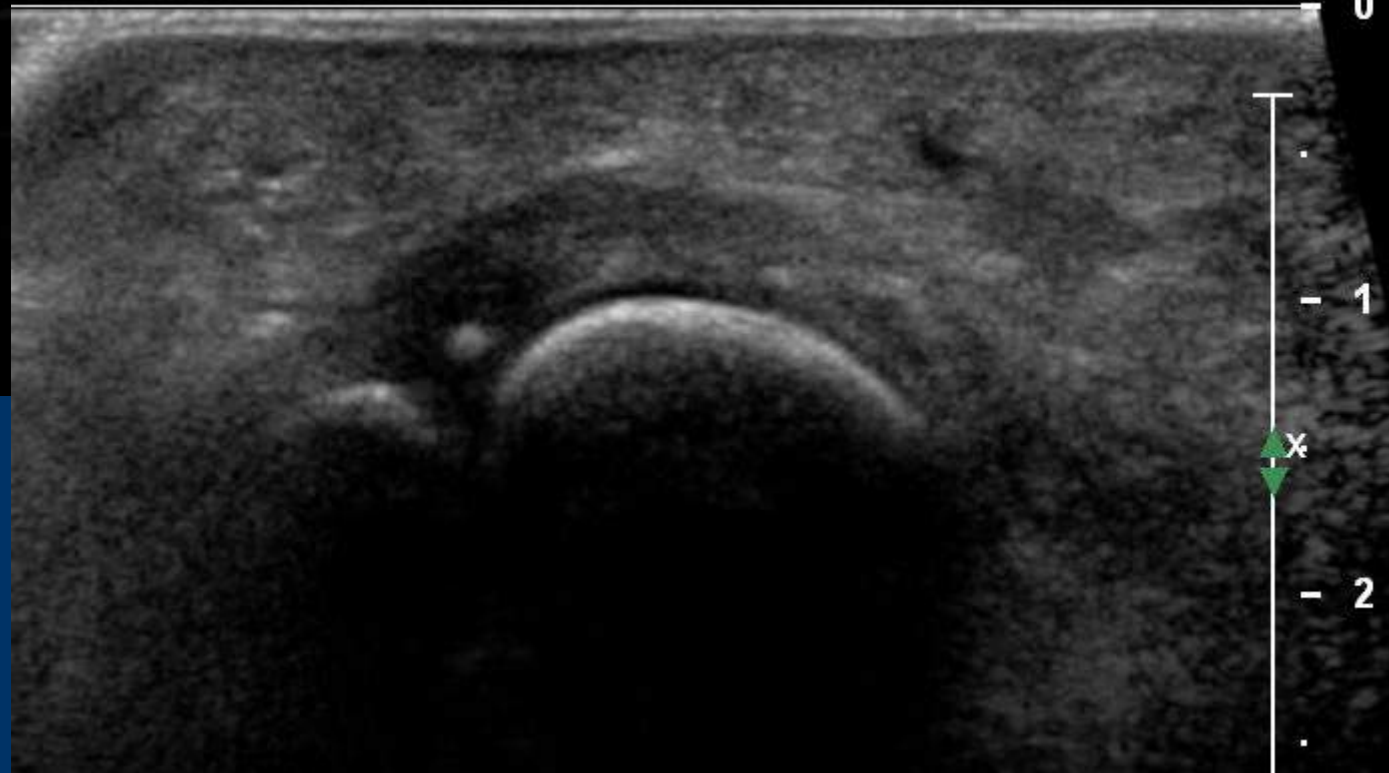
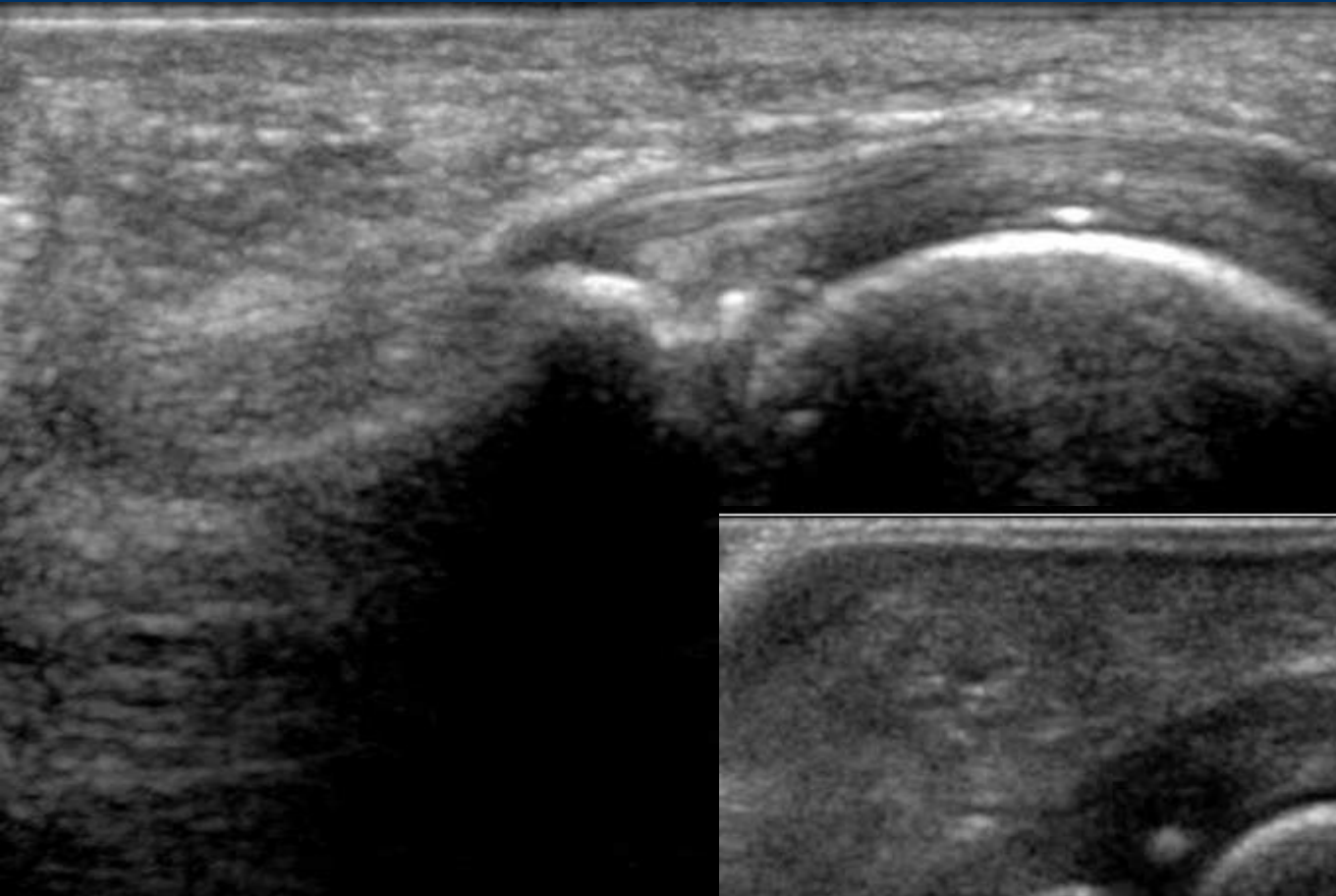


# *sesamoidi accessori*

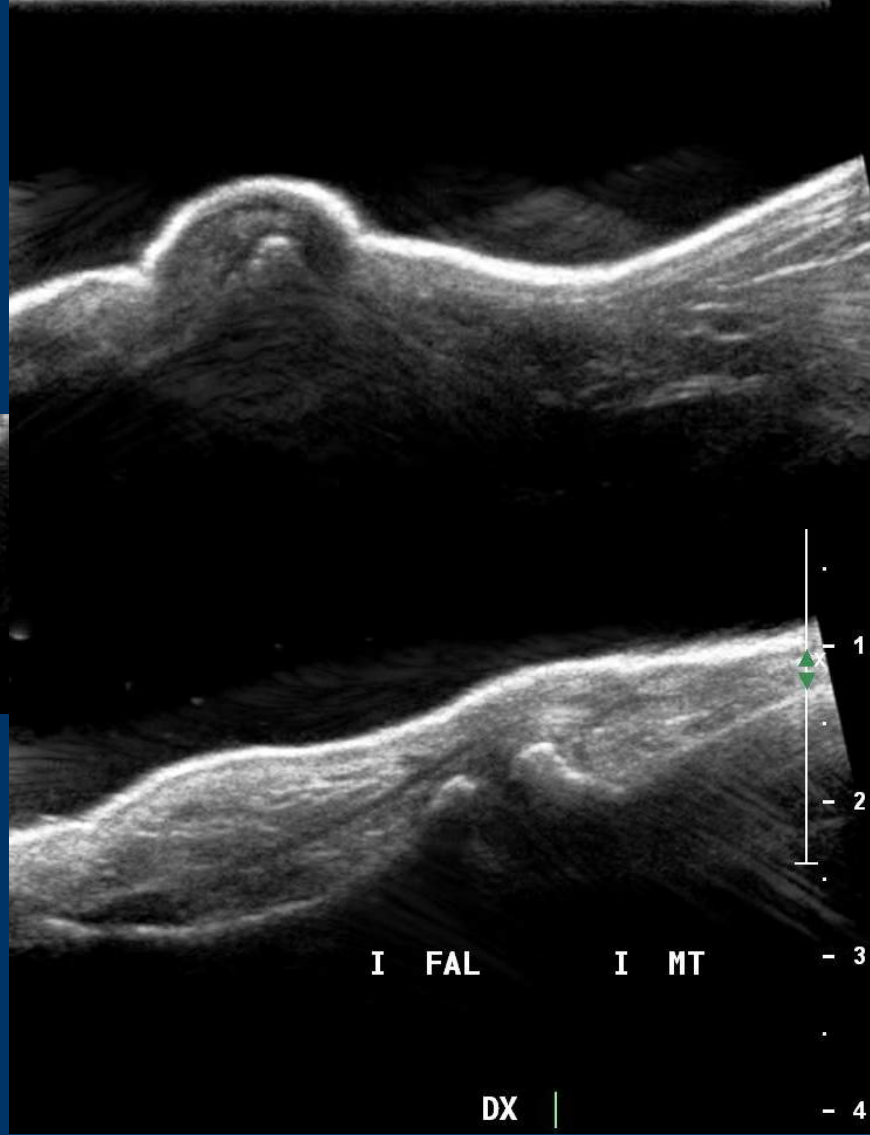
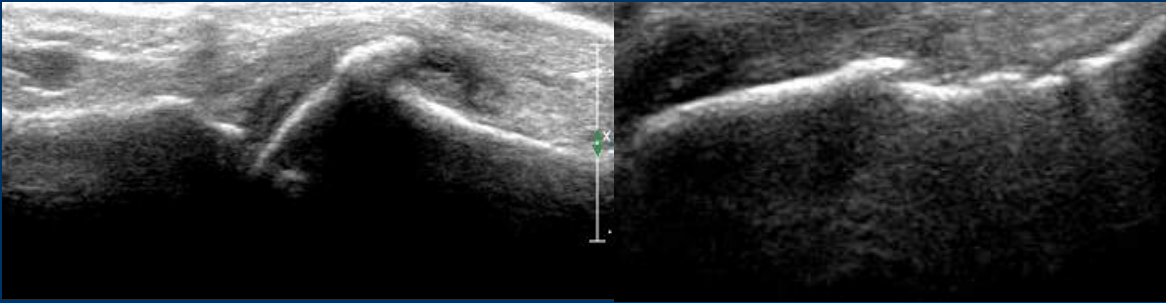
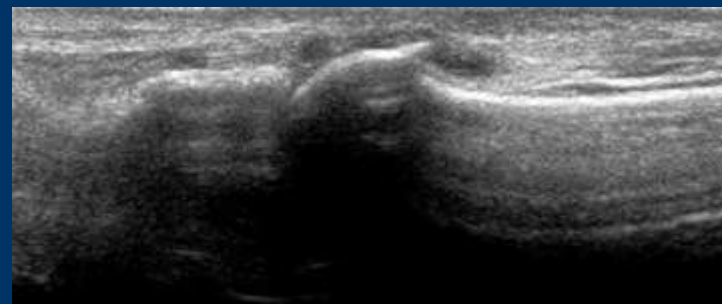
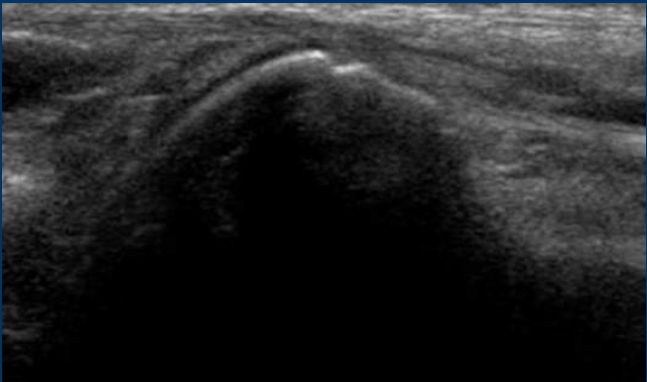




# *calcificazioni e microcalcificazioni capsulari*

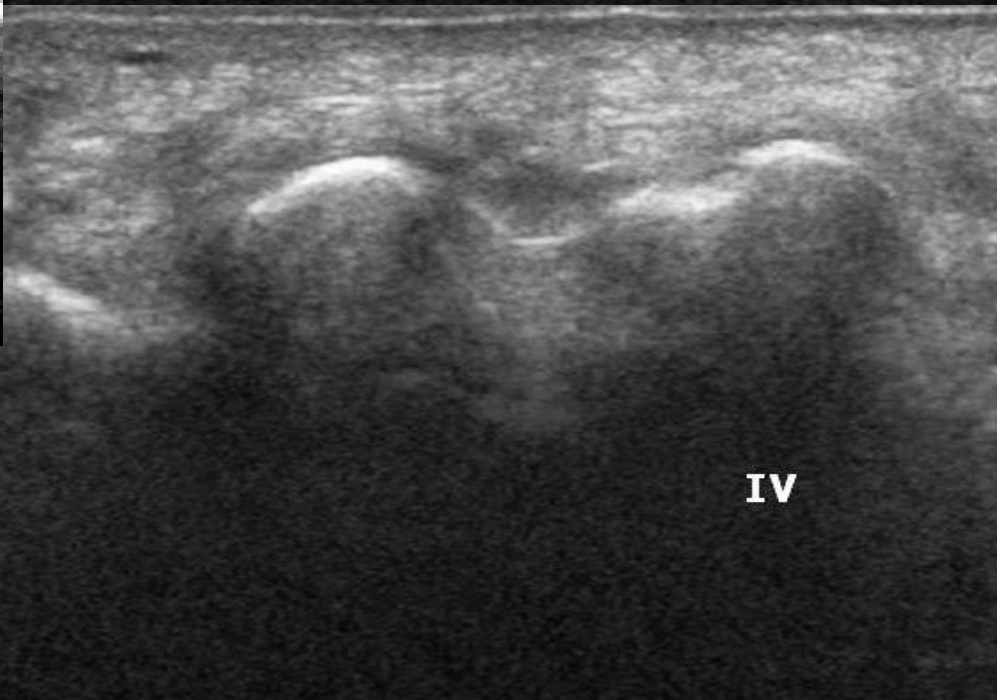


*esostosi, erosioni, depressioni*



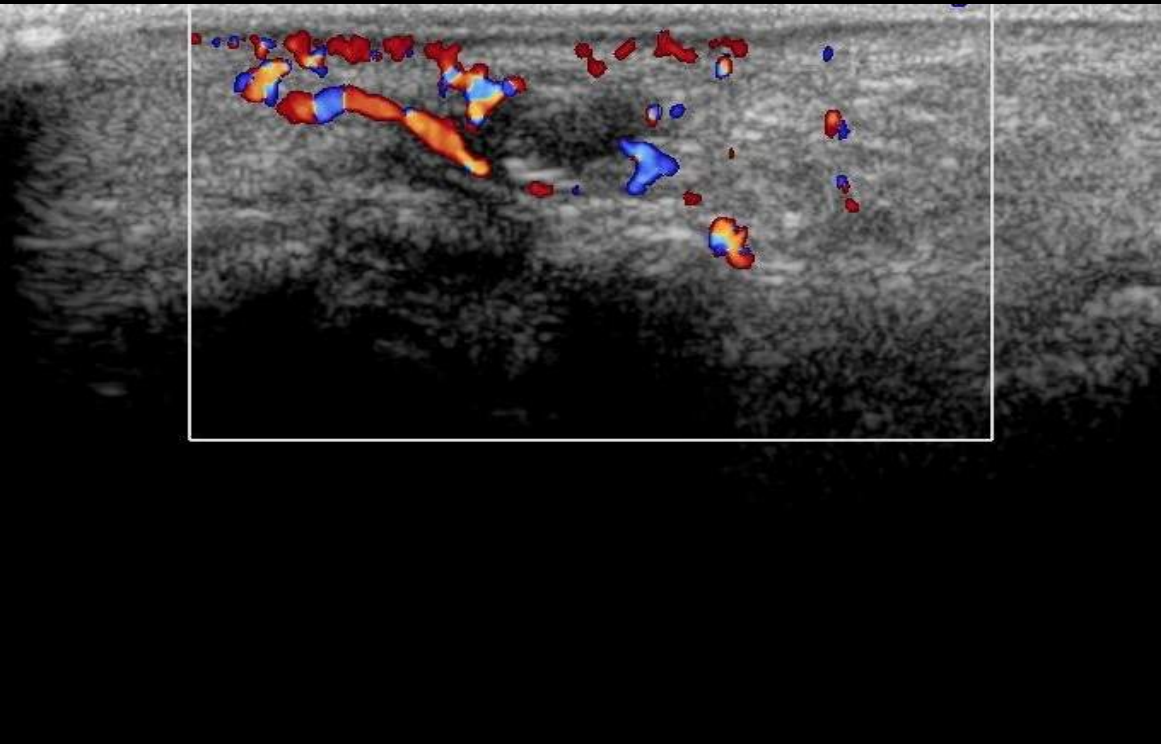
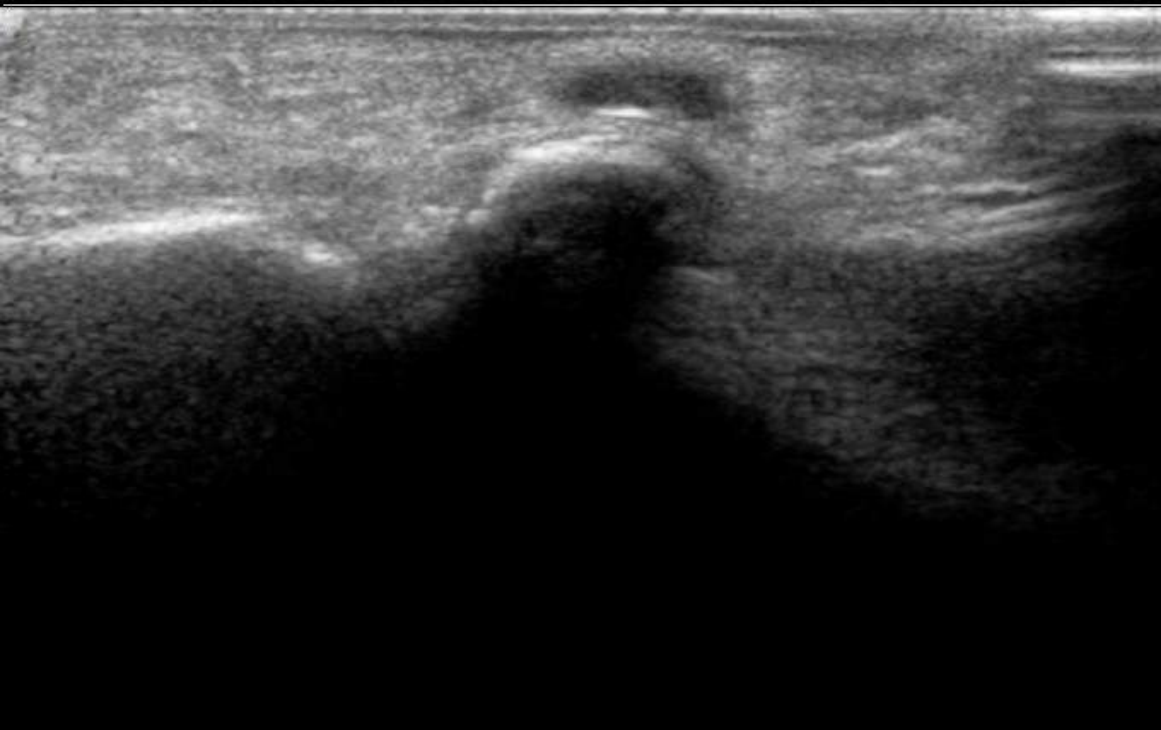


*modifiche ossee e/o alterazioni  
congenite*



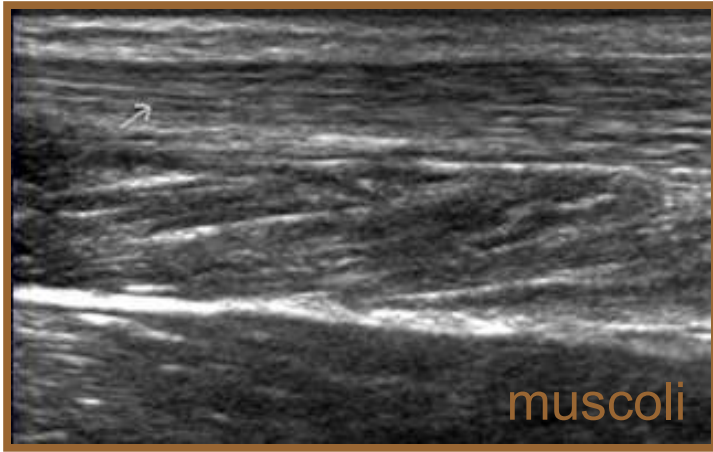


# *Flogosi e cisti*

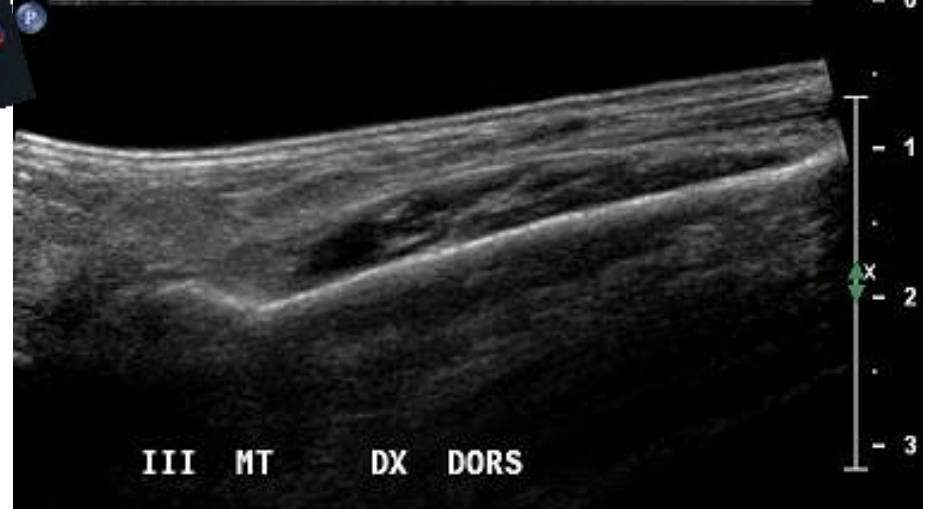
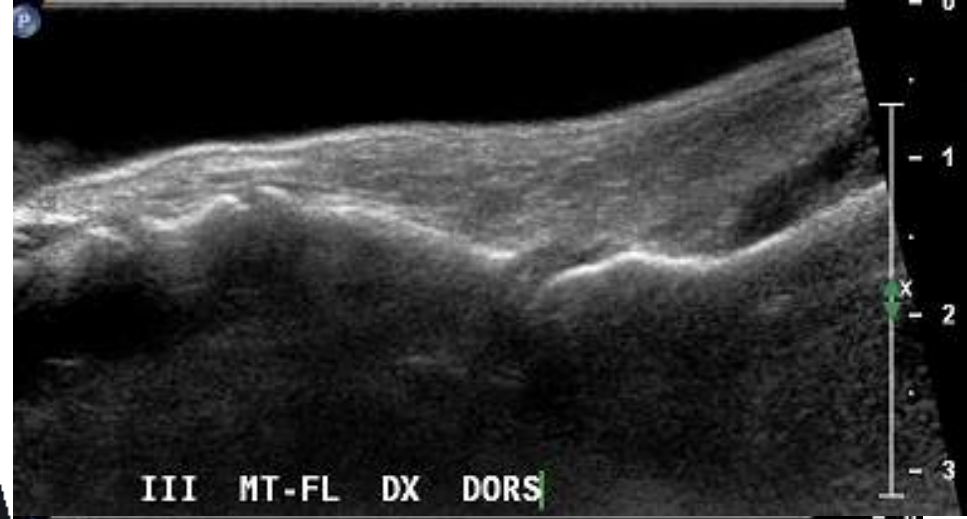


V MT-FL Sinistra





*interosseo  
bipennato*



• **patologie muscolo-tendinee**

